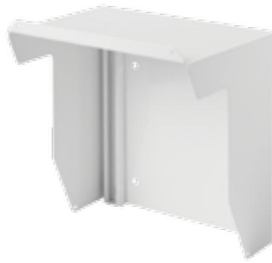


WALL-MOUNT SOLAR SHIELDS

INDUSTRY STANDARDS

UL 508A Listed; Type 4, 12; File No. E61997
 cUL Listed per CSA C22.2 No 94; Type 4, 12; File No. E61997

NEMA/EEMAC Type 4, 12
 IEC 60529, IP66

APPLICATION

Wall-mount Solar Shield protects outdoor enclosures from overheating and provides weather protection from sun, rain and snow. Enclosures are shielded from the top, sides and rear; white powder paint finish maximizes solar heat reduction. Two sets of fully-adjustable mounting channels are provided to mount any type of wall-mount enclosure that fits inside the solar shield. Mounting hardware and step-by-step instructions are included.

Shielding Effectiveness

Hoffman's research of the effects of solar radiation on enclosures has shown the positive benefits of utilizing shielding to decrease temperature rise. Shielding has been found to be an effective, low-cost method of reducing solar heat gain in outdoor electrical and electronic applications. Recent test results indicate that a wall-mount solar shield provides an approximately 56% reduction in temperature rise due to solar head load.

SPECIFICATIONS

- 14 gauge galvanized steel
- Adjustable mounting allows various wall-mount enclosures to fit inside the solar shield. Refer to the table below to determine which solar shield fits your enclosure size.
- Fits most CONCEPT, INLINE and NEMA Type 4 wall-mount enclosures and junction boxes [i.e. Bulletins A51NF and A51FL]
- Hardware is included for mounting an enclosure to the solar shield

FINISH

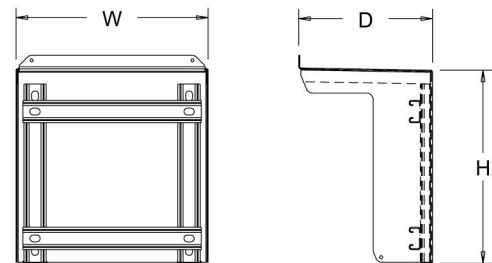
- Hoffman #60 White powder paint finish inside and out

ACCESSORIES

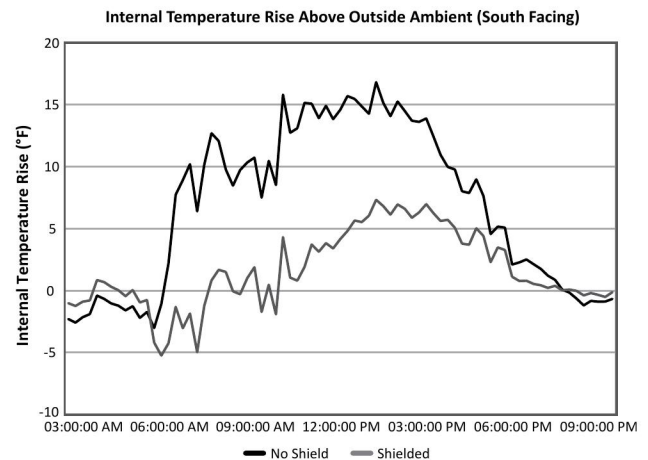
Solar Shield Replacement Hardware Kit, Type 4
 Pole-Mount Kit
 Touch-Up Paint (Hoffman #60 White)

MODIFICATION AND CUSTOMIZATION

Hoffman excels at modifying and customizing products to your specifications. Contact your local Hoffman sales office or distributor for complete information.



89123906


BULLETIN: A80SH
Standard Product Solar Shield

Catalog Number	Description	H (in.)	H (mm)	W (in.)	W (mm)	D (in.)	D (mm)	*Maximum overall enclosure size A x B x C (in.)	*Maximum overall enclosure size A x B x C (mm)
SW2SGLWH	Solar Shield, 2S, Galvanized, White	14.00	356	14.00	356	9.75	248	10.00 x 10.00 x 8.00	254 x 254 x 203
SW1MGLWH	Solar Shield, 1M, Galvanized, White	16.00	406	16.00	406	11.75	298	12.00 x 12.00 x 10.00	305 x 305 x 254
SW2MGLWH	Solar Shield, 2M, Galvanized, White	20.00	508	20.00	508	11.75	298	16.00 x 16.00 x 10.00	406 x 406 x 254
SW1LGLWH	Solar Shield, 1L, Galvanized, White	24.00	610	24.00	610	12.75	324	20.00 x 20.00 x 12.00	508 x 508 x 305
SW2LGLWH	Solar Shield, 2L, Galvanized, White	28.00	711	28.00	711	15.75	400	24.00 x 24.00 x 14.00	610 x 610 x 356

*Adjust the overall enclosure size if there are any components (such as cooling units or accessories) mounted externally to the enclosure

Standard Product Solar Shield Replacement Hardware Kit

Catalog Number	Description
SWHDK4	Replacement Hardware Kit: (12) clamping nuts; (12) screws; (8) sealing washers and (4) flat washers

Shielding Effectiveness (Outside Temperature = 85.8 F)

Enclosure (Color: ANSI 61 Gray)	Temperature Rise (F)	Temperature Reduction (%)
Without solar shield	16.8	--
With solar shield	7.3	56

Notes